

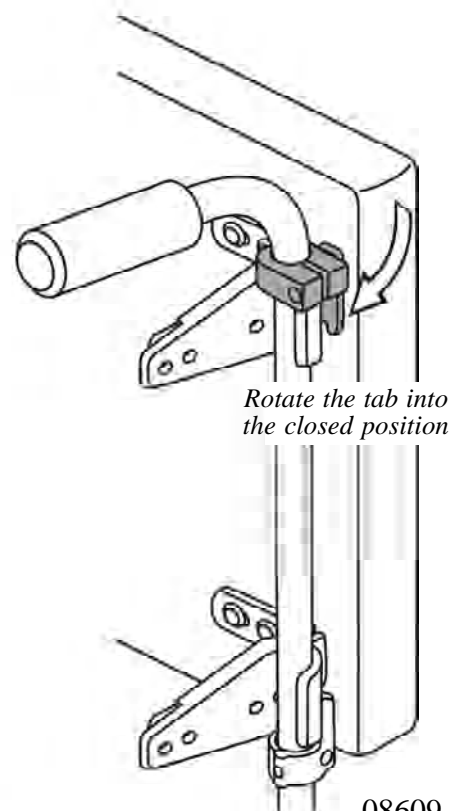
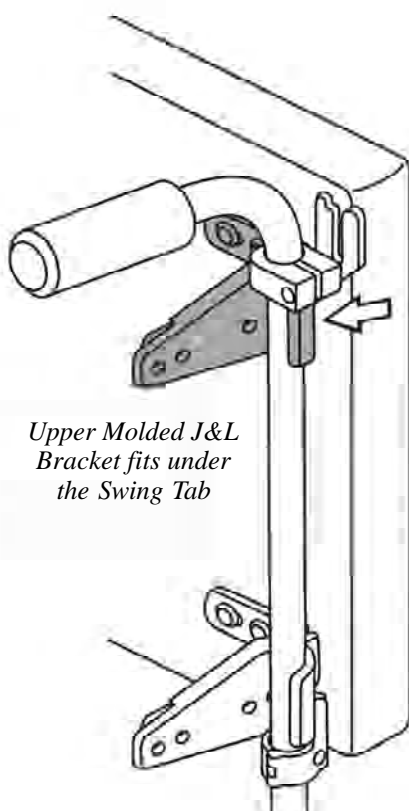
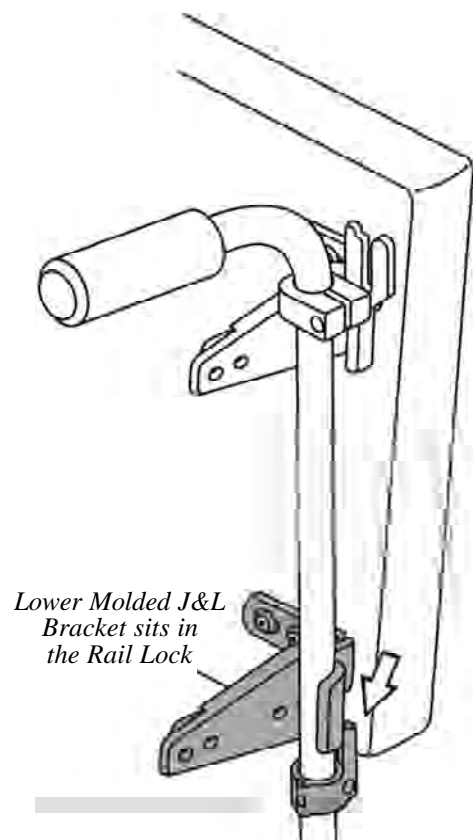
MOLDED J&L BACK HARDWARE

These instructions are general information, and should be used to determine the best way for you to set up the kit, based on your particular needs and equipment

Attach Hardware To Back Cushion

Step 1: Install the Molded J&L Brackets on the back cushion. Adjust them so they hold the cushion in the desired position relative to the back canes. Tighten them onto the back cushion.

IMPORTANT: Squeeze the Swing Tab and Rail Lock in place and install the bolt **STRAIGHT THROUGH IT!**



08609

Attach Hardware To Chair

FIRST READ IMPORTANT NOTES BELOW!

Step 2: Install the Swing Tabs and Rail Locks on the back canes of the chair. Use all 4 spacers for 7/8" tubes, or 2 for 1" tubes.

Position the Rail Locks to hold the lower Molded J&L Brackets, and tighten them onto the canes. Then position the Swing Tabs directly above the upper Molded J&L Brackets, and tighten them onto canes.

Attach Back Cushion To Chair

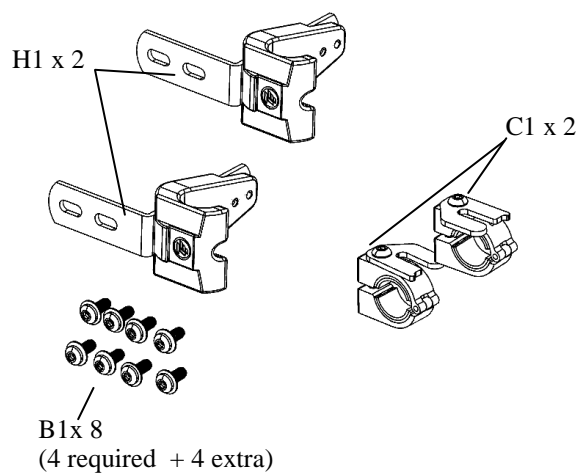
Step 3: Tilt the cushion and set the lower Molded J&L Brackets into the Rail Locks. Straighten the cushion so the upper Molded J&L Brackets are positioned directly under the Swing Tabs. Rotate the tabs into the closed position to hold cushion in place.

IMPORTANT: DO NOT OVERTIGHTEN the Swing Tabs and Rail Locks! When attached to the frame, A GAP WILL REMAIN BETWEEN THE PIECES.

Molded J & L Hardware Pair

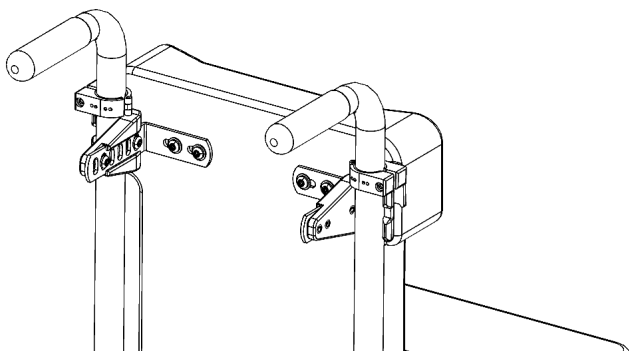
- ⚠ Caution: Read Instructions before operating device.
- ⚠ Caution: Device should be installed by a trained wheelchair technician.
- ⚠ Caution: Device should be attached to a wheelchair seat and back that conform with ISO16840-3 or equivalent.
- ⚠ Caution: Use caution when installing, removing or adjusting device to avoid pinching or trapping fingers.
- ⚠ Caution: Always tighten all fasteners securely and inspect fasteners regularly for tightness.

Product Identification



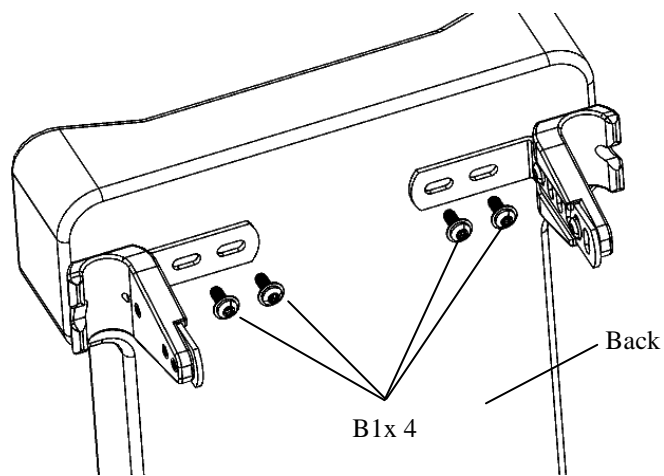
To Install:

Image below shows installed device.

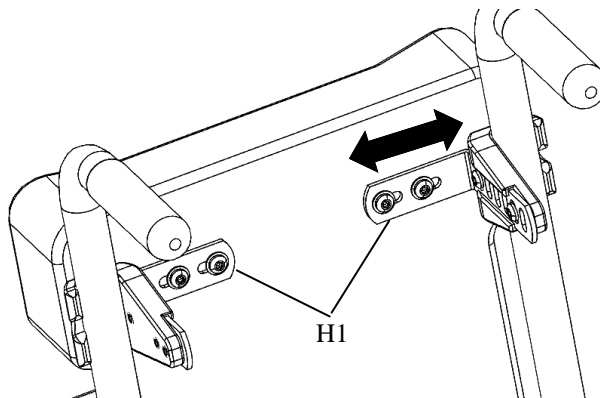


To Install:

Step 1: Attach H1 x2 to back using B1 X 4. Do not tighten bolts.

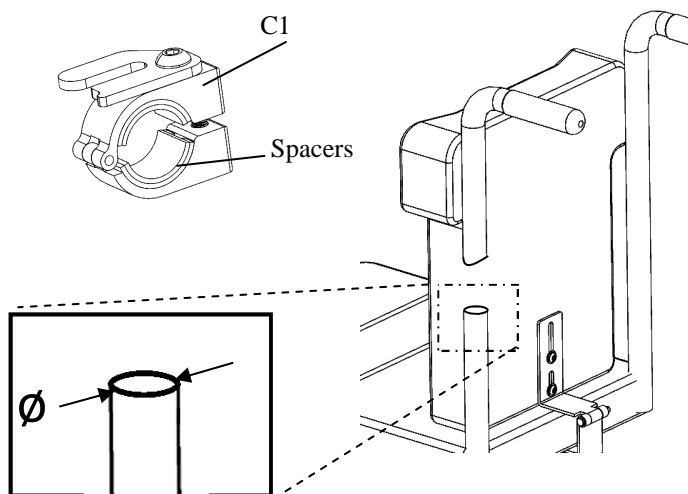


Step 2: Adjust H1 to fit wheelchair. Tighten bolts.



Molded J & L Hardware Pair

Step 3: Select spacers used with C1 to fit wheelchair.

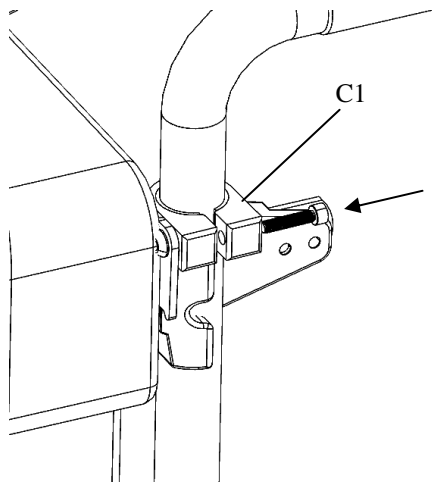


$\varnothing = 1.125''$

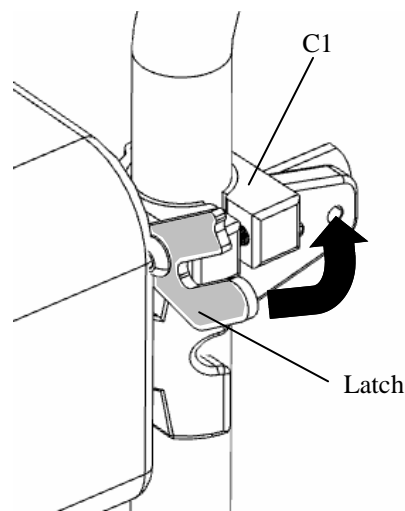
$\varnothing = 1.0''$

$\varnothing = .875''$

Step 4: Attach C1 to wheelchair. Place as shown below. Tighten fasteners.



Step 5: Rotate latch on C1 to remove back from wheelchair.



Care and Cleaning

⚠ Caution: Always tighten all fasteners securely and inspect fasteners regularly for tightness.

1. Clean with mild detergent and water using damp cloth. Air Dry.



2. Check all fasteners and retighten as needed.

Warranty

Any product found to be defective due to the material or workmanship within one year will be replaced under our return policy following product evaluation by Therafin Corporation. This replacement warranty does not include misuse or neglect of the product.

Document 08683
Revision A 08-2016



Therafin Corporation
9450 W Laraway Road
Frankfort, IL 60423 USA
800-843-7234
www.therafin.com